

# Trapeze Group **Company Overview**



# About **TRAPEZE GROUP**

Trapeze Group works with public transport authorities, operators and their communities to develop and deliver smarter, more effective public transport technology. For more than 50 years we have been *Here for the Journey*, evolving with our customers around the world to help them move people from point A to Z and everywhere in between.

Trapeze is the largest and most established of the 26 brands that coexist under the Modaxo banner, the People Transportation group of the broader Constellation Software group of companies (CSI). CSI has \$6.6b in annual revenue and is one of the fastest growing software companies in the world.



## **Trapeze Group**

Trapeze Group provides technology that helps public transport authorities and operators deliver enhanced, sustainable, equitable and connected passenger journey's.



## **Modaxo**

With over 2,400 passionate and dedicated employees worldwide, Modaxo understands the impact mobility has on the fabric of daily life and is inspired by movement and mobility across all modes of people transportation.



## **Constellation Software (CSI)**

CSI acquire, manage, build and hold industry specific software businesses which provide specialised, mission-critical software solutions to vertical markets growing to \$6.6b in annual revenues.

# Trapeze Group: **HERE FOR THE JOURNEY**

Enhancing lives by delivering public transport technology for a better tomorrow.

Trapeze Group provides enterprise technology solutions built specifically for public transport, and has a 50-year history of working with public transport authorities and operators worldwide to deliver long-term value and results.

Trapeze Group helps transport authorities and operators with integrated tools to maximise productivity across all elements of their business. We know the public transport business and provide solutions for Intelligent Transport Systems,

planning and scheduling, day of operations, fleet and asset management, workshop, rostering, performance, and payroll.

With our global headquarters in Toronto, Canada, we have over 2,500 customers serviced by more than 1,100 staff worldwide who work across all industries connected to public transport from buses to rail, trams, ferries and taxi. [Learn More](#)



At Trapeze we are dedicated to producing solutions that help our customers deliver more efficient, equitable, sustainable and connected journey's for their passengers.

**Emad Muhanna**  
Group Leader, AMEA  
at Modaxo and  
Trapeze Group



## Our History & GROWTH

We have over 50 years' experience supporting public transport organisations deliver great passenger experiences.

*1970s*

Zurich Transport Authority  
deploys our ITS system to  
manage their fleet of trams  
and buses



*1980s*

Worked with public  
transport organisations  
to improve planning and  
scheduling around the  
world



*1990s*

Dubai RTA deploys our  
system to manage its  
10,700 strong taxi fleet



*2000s*

Improved asset  
management, making it  
easier for agencies to know  
the status of their vehicles



*2010s*

First to have autonomous  
buses integrated into a  
public transport system



*the Future*

Creating new solutions to  
transform public transport  
and achieve equitable,  
sustainable and connected  
journeys



# Our SOLUTIONS

Trapeze offers a range of solutions to Public Transport Authorities and Operators that help them to optimise service delivery, increase ridership and enhance and connect the passenger journey.



**Planning &  
Scheduling**



**Enterprise Asset  
Management**



**Enterprise Resource  
Planning**



**Intelligent  
Transport Systems (ITS)**



**Yard  
Management**



**Workforce  
Management**



**Passenger  
Information**



**TEAMS**  
(The Trapeze Taxi & eHail  
Automated Management System)



**Driver Advisory  
Systems (DAS)**



**Demand  
Response**



**Ticketing**

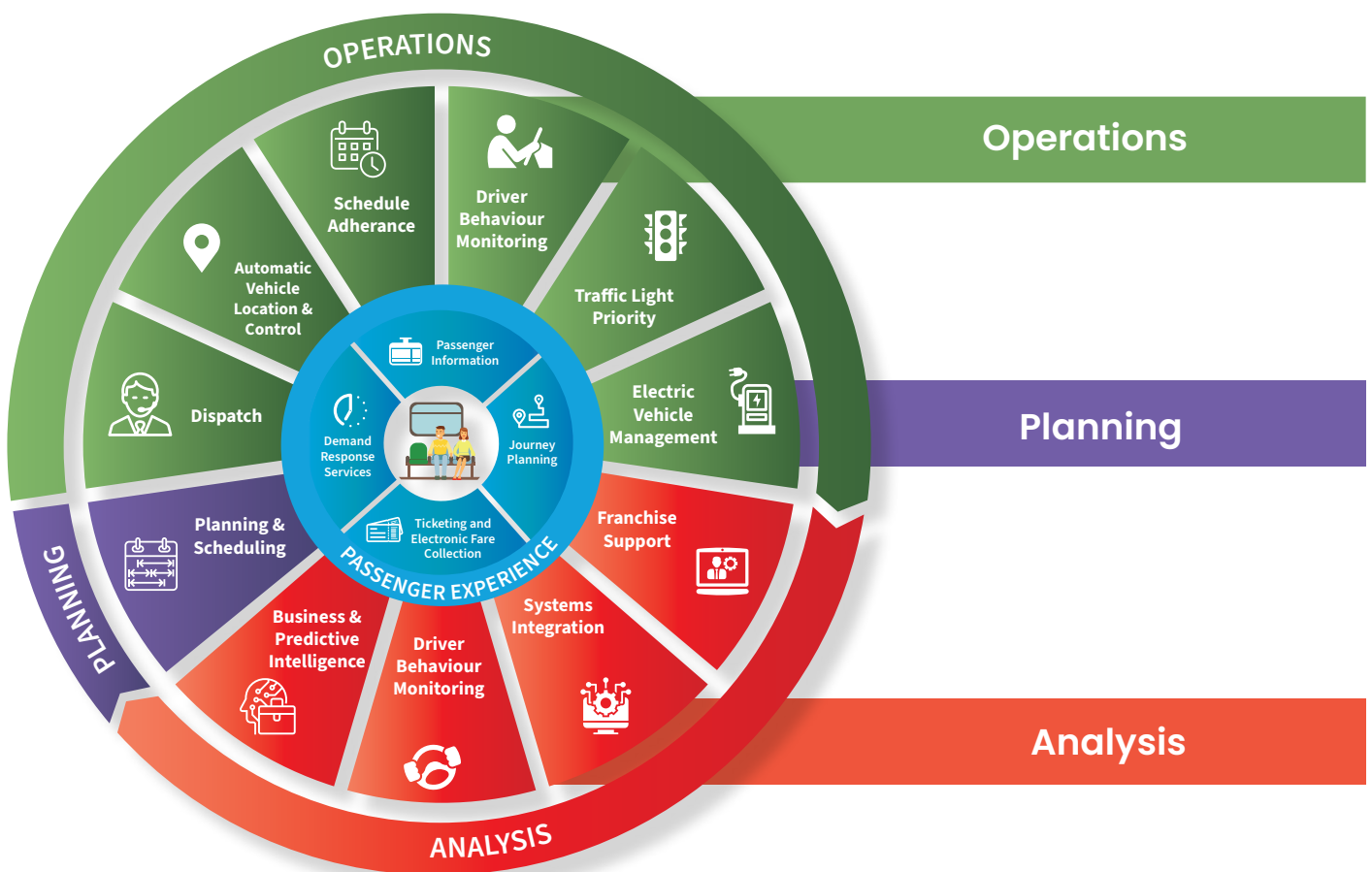


**Journey  
Planning**

# Our INTELLIGENT TRANSPORT SYSTEMS

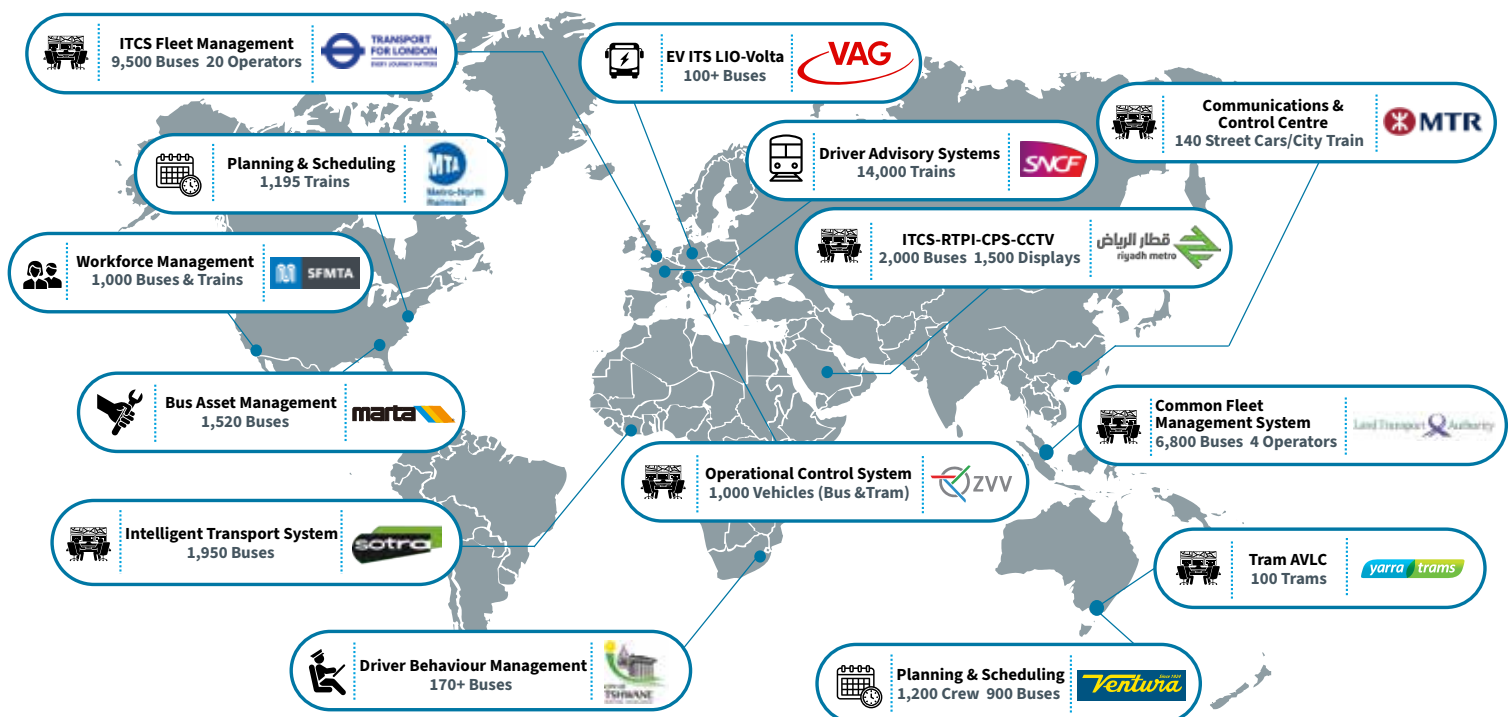
A key product in Trapeze's solutions suite is our Intelligent Transport Systems (ITS) technology, which makes managing tram, light rail, ferry, and bus transport networks easier and more efficient. These ITS technologies enable authorities to effectively plan, schedule, operate, and analyse their multimodal networks and transform the way services are delivered, enhancing the passenger experience. Our dedicated team of ITS industry experts offers end-to-end local support backed by over 50 years of proven global experience in major cities like London, Singapore, and Zurich that shows we are 'Here for the Journey'.

ITS is many technologies working together.



# Our Global CUSTOMERS

Trapeze technology helps over 2500 customers around the world enhance public transport for their passengers. Below is a map highlighting some of our major global customers. To see more case studies, visit our website [www.trapezegroup.ae](http://www.trapezegroup.ae)



We are coming into our 25th year of working with Trapeze Group in our taxi management business and they continue to be responsive to our needs as we strive to give Dubai's people smooth and safe transport. They have truly been here for our journey.

Adel Shakeri,  
Transportation Director, RTA





# About Trapeze Middle East

## ENABLING SMARTER MOBILITY SOLUTIONS FOR 25+ YEARS

Trapeze Group Middle East has been providing transportation software solutions in the region since 1996. We are a leader in public transport technology, focused on developing software and systems that improve efficiency, reliability and quality for our clients.

### Some of our key projects and offerings include:

- Taxi solution provider to Dubai Roads & Transport Authority for over 25 years, managing 30,000 drivers and 12,500+ vehicles with AED 25 billion in fare collection
- Intelligent Transport Systems partner for the Riyadh Bus Project, integrating Automatic Vehicle Location and Real-Time Passenger Information for their 1,500 bus fleet

- Scheduling, planning and management tools that incorporate features like real-time tracking, passenger information displays and analytics

With offices in the UAE, we aim to support growing transportation needs across the Middle East. Leveraging big data and years of regional experience, our customized solutions help optimize operations and enhance the commuter experience.

Trapeze Group Middle East has proven success in delivering advanced public transit technologies that reduce costs and adapt to evolving urban mobility demands.



“For over 25 years, Trapeze Group Middle East has been a trusted partner supporting public transportation development across the region. We take pride in leveraging our local expertise to deliver customized solutions that meet the unique mobility needs of cities in the Middle East.”

**Emad Muhanna**  
Group Leader, AMEA, at Modaxo and  
Trapeze Group



# The Modaxo Family:

## CONNECTING PEOPLE WITH THE PLACES THEY NEED TO BE




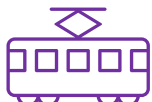








Modaxo is the home of many of the world's most respected and widely used transport technology companies. Working both together and independently, Modaxo businesses, like Trapeze, are focused on one thing — delivering software and technology solutions that help connect people with the places they need to go for work, family, and everyday life.

Modaxo is Constellation Software's (TSX: CSU) people transportation portfolio. Our sole focus on people

transportation is reflected in Modaxo's mission to enable the daily movement of 1 billion people by 2030. With people who are truly passionate about what they do, Modaxo understands the impact mobility has on the fabric of daily life.

From its early beginnings in fixed route bus software, to today's multi-sector, multi-modal global solutions, Modaxo continues to build our portfolio into all sectors that actively look to move people.

SECTORS

			
Fixed Route	Demand Response	Paratransit	Tram, Metro, Light Rail
			
Passenger Rail	Medical	Taxi, eHail	School
			
Aviation	Parking	Traffic Management	MaaS

Singular  
Focus on  
Moving  
the World's  
People

# The Modaxo Difference:

## PASSIONATE ABOUT MOVING THE WORLDS PEOPLE

We thrive on delivering dependable people transportation solutions that meet the real-life needs of our customers in the communities where we live and serve. For our customers, working with Modaxo companies means the best of both worlds: globally leading solutions specifically developed to meet customer needs, delivered and supported by expert local teams that know customers and the sector.

With over 2,500 passionate and dedicated employees worldwide, Modaxo understands the impact mobility has on the fabric of daily life and is inspired by movement and mobility across all modes of people transportation.

Our people are driven to enhance and expand our technology platforms for the people transportation sector, making significant investments each year to sustain existing products and build out our innovation roadmaps while acquiring technology companies that expand our capabilities and reach across the industry. No other organisation brings together so many different businesses, competencies, and experiences under one global banner to focus exclusively on People Transportation. This singular focus makes Modaxo a great home for people and companies that share our vision to move the world's people. [Learn More](#)

### Modaxo Today



26



2,500+



1,600+  
Cities



3,180+  
Customers



35  
Countries

“Modaxo’s expertise, global bench strength, and singular focus on People Transportation make it a great home for technology companies that share our vision to efficiently move the world’s people.”

Bill Delaney,  
CEO, Modaxo



## About CSI

# CONSTELLATION SOFTWARE

Founded by Mark Leonard in 1995, Constellation Software (CSI) is an international provider of software and services to over 100 public and private sector vertical markets. We acquire, hold, manage and build industry specific software businesses which provide specialised, mission-critical software solutions that address the particular needs of our customers. Our businesses continuously develop innovative solutions that enable our customers to achieve their objectives and our top 10 customers represent less than 5% of revenues. They serve various sectors, including communications, financial services, utilities, construction, mining, oil and gas, healthcare, and people transportation, a sector managed by our Modaxo operating group.

With over 125,000 customers in over 100 countries and a proven track record of solid growth, Constellation has established a broad portfolio of software businesses to provide our businesses and shareholders with exceptional returns. This track record led brand valuation consultancy Brand Finance to rank us #8 on its list of [most valuable software brands](#) in the world and also name CSI as the world's fastest growing software brand in 2022. The ranking puts Constellation among companies that include Microsoft, Oracle, SAP, Salesforce, Adobe, VMware, and Workday.

CSI has business presence across the globe in Europe, Asia, the Americas, and Africa, is headquartered in Toronto, Ontario, Canada and is listed on the Toronto Stock Exchange. [Learn More](#)

**\$35b+**  
in market  
capitalisation

**\$6.6b**  
in total revenues

**51,000+**  
employees across  
the globe

**125,000+**  
customers in over  
100 countries

**900**  
companies acquired  
in >100 vertical  
markets



*Software  
Tailor Made  
for Public  
Transport*

*2,500  
Customers in  
over 30  
Countries*

*Your World  
is Local.  
So is Ours.*



Trapeze Group works with public transport agencies and their communities to develop and deliver smarter, more effective public transport solutions. For more than 25 years we have been *Here for the Journey*, evolving with our customers around the world to help them move people from point A to Z and everywhere in between.

Africa	+27 11 568 3096
UAE	+971 4 252 6640
Saudi	+966 11 26 999 28

Singapore	+65 6340 1022
Malaysia	+60 32386 3678
India	+91 98104 07444

**TRAPEZE GROUP MIDDLE EAST**

Office 1102 & 1104, 11th Floor,  
Al Masaoood Tower, Port Saeed, Al Maktoum Road, Dubai  
[trapezegroup.ae](http://trapezegroup.ae)